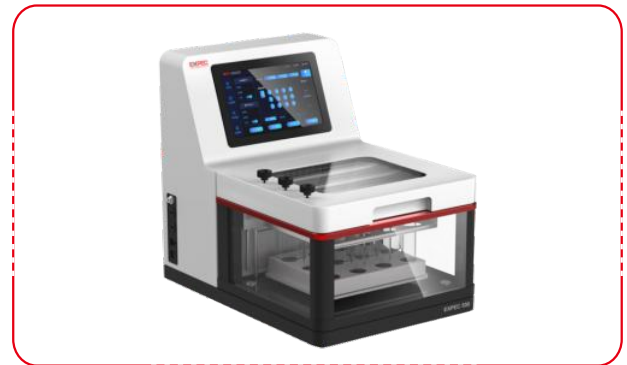


EXPEC 530 Automatic Constant Volume Parallel Concentrator

Overview

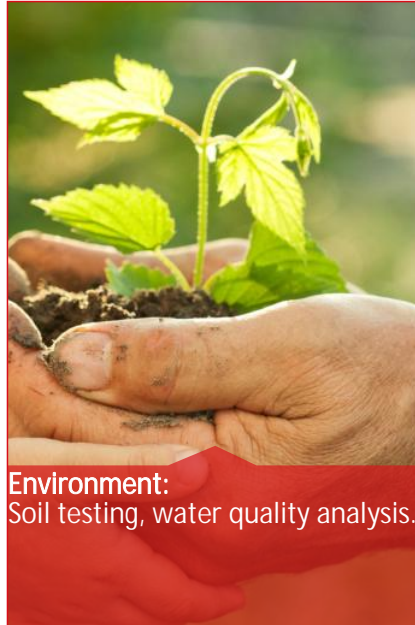
EXPEC 530 Automatic Constant Volume Parallel Concentrator, It is innovatively developed by Expec Technology to meet the laboratory needs of accurate volume determination, efficient concentration, and convenient use. The sample is concentrated under the combined action of water bath and nitrogen blowing. During this period, the nitrogen blowing needle can be adjusted at multiple angles to form a vortex nitrogen blowing, accelerate the concentration speed; The product has the advantages of uniform heat transfer, fast concentration, and good parallelism. It is a powerful helper for laboratory pretreatment.



Features

- **High-throughput sample processing:** Nitrogen blowing and concentration of 12 sample tubes can be achieved simultaneously.
- **End point control function:** The bottom of the sample tube is equipped with an optical sensor, which can automatically determine the end point of concentration. It is stable and reliable. A fixed volume of 0.5mL/1mL can be selected.
- **Highly visual observation:** Three transparent glass windows are visible, allowing real-time observation of the concentration during the experiment.
- **High compatibility:** Can be adapted to 80mL or 300mL sample tubes.
- **Bottle wall rinsing function:** The bottle wall can be automatically rinsed with solvent within a set time to improve sample recovery rate.
- **Safety protection in place:** Use a fully enclosed water bath, built-in exhaust fan, and designed exhaust pipeline to reduce the risk of solvent exposure.
- **Adopt humanized design:** After opening the lid of the concentration chamber, the gas will be automatically cut off to reduce nitrogen loss.

Application



Specification

EXPEC 530 Automatic Constant Volume Parallel Concentrator

1	Batch processing capability	12 position
2	Concentration method	Use uniform heating of water bath and nitrogen blowing
3	Temperature control method	PID
4	Temperature error	$\leq \pm 1^{\circ}\text{C}$
5	Environmental friendliness	Fully closed
6	Ambient temperature	(5~40) °C
7	Ambient humidity	20~80%RH
8	Working power supply	AC 220 \pm 10% /50HZ

Hangzhou EXPEC Technology Co., Ltd.

Add: No.2466 Science and Technology Avenue, Qingshanhu Street, Lin 'an District, Hangzhou

Website: www.expec-tech.com

Hotline: 400-700-2658

