

DAIHAN-brand® High-performance Dry Bath-Heating & Cooling, “HB-R”, $-5^{\circ}\text{C}\sim 95^{\circ}\text{C}$, $\pm 0.1^{\circ}\text{C}$ with Digital PID Control, Acrylic Lid, Precise Temperature Control, Modular Blocks, Anodized Aluminum Block



Heat/Cool Package-Set “HB-R48-Set” with Block “BLC548”
for 1.5/2ml Centrifuge Tube \times 48 holes

Included Block in the Package-Set



(3) “BLC548”
1.5/2ml Centrifuge Tube \times 48 holes

- with Certificate & Traceability :
Controlled by Serial Number, Certificate, Delivery-information, and Traceable Data Base System
- Designed for Multi-Function : Enzyme Reactions, Inactivation of Sera, Incubation and Other Laboratory Procedures.
- **Patented Jog-Shuttle Control System** and Digital LCD with Back-Light Function
- CE Certified ■ **PL(Product Liability) Insurance**

- * User Self-Compensation Function to offset between Actual and Displayed Temperature. ($\pm 10.0^{\circ}\text{C}$)
- * Storage Function of Temperature and Timer setting values
- * Locking Mode Supported for Experimental Safety (Input to Jog-Shuttle can be Disabled)

Specification

Model	Heat/Cool Package-Set “HB-R48-Set”
Capacity (1.5/2ml Tube)	48 holes \times 1.5/2ml Centri. Tubes
Dimension : Unit & Block	185 \times 230 \times h220mm, and 90 \times 120 \times h60mm
Cooling	Two Peltier Modules
Cool-Down Speed	2.3 $^{\circ}\text{C}/\text{min.}$ between 95 $^{\circ}\text{C}$ to 25 $^{\circ}\text{C}$, 0.5 $^{\circ}\text{C}/\text{min.}$ between 25 $^{\circ}\text{C}$ to -5°C
Heater and Sensor	300W (Molded Heater), PT100
Temp. Range, & Accuracy	-5°C to 95 $^{\circ}\text{C}$, and $\pm 0.1^{\circ}\text{C}$ at 37 $^{\circ}\text{C}$, $\pm 0.2^{\circ}\text{C}$ at 90 $^{\circ}\text{C}$
Heat-Up Speed	Approx. 5 $^{\circ}\text{C}/\text{min}$
Safety Device	Over Temp. and Over Current Protector, Sensor Error Detector
Timer with Alarm	99hr 59min, Alarm (Error Status and Timer - end)
Display	Digital LCD with Back-Light Function
Controller	Digital PID Controller
Material	Internal & External Block Stainless steel (# 304), and Powder Coated steel Anodized Aluminum
Included Standard Acce.	Block “BLC548” for 1.5/2ml Tubes, and Block Tongs “BLE101”
Packing Size, Gross Weight	350 \times 220 \times h310mm, 9 kg
Power Consumption	450 W
Power Supply & Cord Plug *	1 Phase, AC 120V, 60Hz or AC 230V, 50 / 60Hz

* Other Specifications are available upon Customer's Request.

Ordering Information

Dry Bath-Heating & Cooling Package-Set, with 1.5/2ml Block

DH.WHB00249 Dry Bath, Heat/ Cool, “HB-R48-Set”, 230V, with 1.5/2ml Block
DH.WHB02249 , 120V, with 1.5/2ml Block

Dry Bath-Heating & Cooling Unit Only, without Block

DH.WHB00248 Dry Bath, Heat/ Cool, “HB-R48-Unit”, 230V, without Block
DH.WHB02248 , 120V, without Block

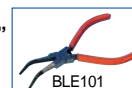
Optional Interchangeable Blocks

- DH.WHB510596 (1) Block, “BLC596”, for 0.2ml PCR Tube, 96 holes
- DH.WHB510570 (2) Block, “BLC570”, for 0.5ml Centrifuge Tube \times 63 holes
- DH.WHB511548 (3) , “BLC548”, for 1.5/2ml Centrifuge Tube \times 48 holes
- DH.WHB521248 (4) Block, “BLT248”, for ϕ 12mm Test Tube, 48 holes
- DH.WHB521335 (5) , “BLT335”, for ϕ 13mm Test Tube, 30 holes
- DH.WHB521535 (6) , “BLT535”, for ϕ 15mm Test Tube, 30 holes
- DH.WHB521628 (7) , “BLT628”, for ϕ 16.5mm Test Tube, 24 holes
- DH.WHB521828 (8) , “BLT828”, for ϕ 18mm Test Tube, 24 holes
- DH.WHB531515 (9) Block, “BLC515”, for 15ml Conical Tube, 15 holes
- DH.WHB535008 (10) , “BLC008”, for 50ml Conical Tube, 8 holes

DH.WHB500101 Spare Block Extraction Tongs, “BLE101”

Validation (IQ, OQ) Service

DH.WHB30248 Validation Service(IQ, OQ), “DBVR248”, for “HB-R48”

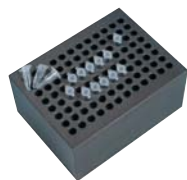


<Continued on next page>

Cat. No	Description	Articles
---------	-------------	----------

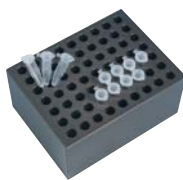
<Continued from... DAIHAN-brand® High-performance Dry Bath-Heating & Cooling, "HB-R">

The Details of 10 Optional Blocks



(1) "BLC596"

0.2ml PCR Tube × 96 holes



(2) "BLC570"

0.5ml Centrifuge Tube × 63 holes



(3) "BLC548"

1.5/2ml Centrifuge Tube × 48 holes
Included in the Package-Set



(4) "BLT248"

φ 12mm Tube × 48 holes



(5) "BLT335"

φ 13mm Tube × 30 holes



(6) "BLT535"

φ 15mm Tube × 30 holes



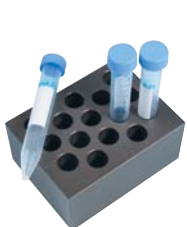
(7) "BLT628"

φ 16.5mm Tube × 24 holes



(8) "BLT828"

φ 18mm Tube × 24 holes



(9) "BLC515"

15ml Conical Tube × 15 holes



(10) "BLC008"

50ml Conical Tube × 8 holes